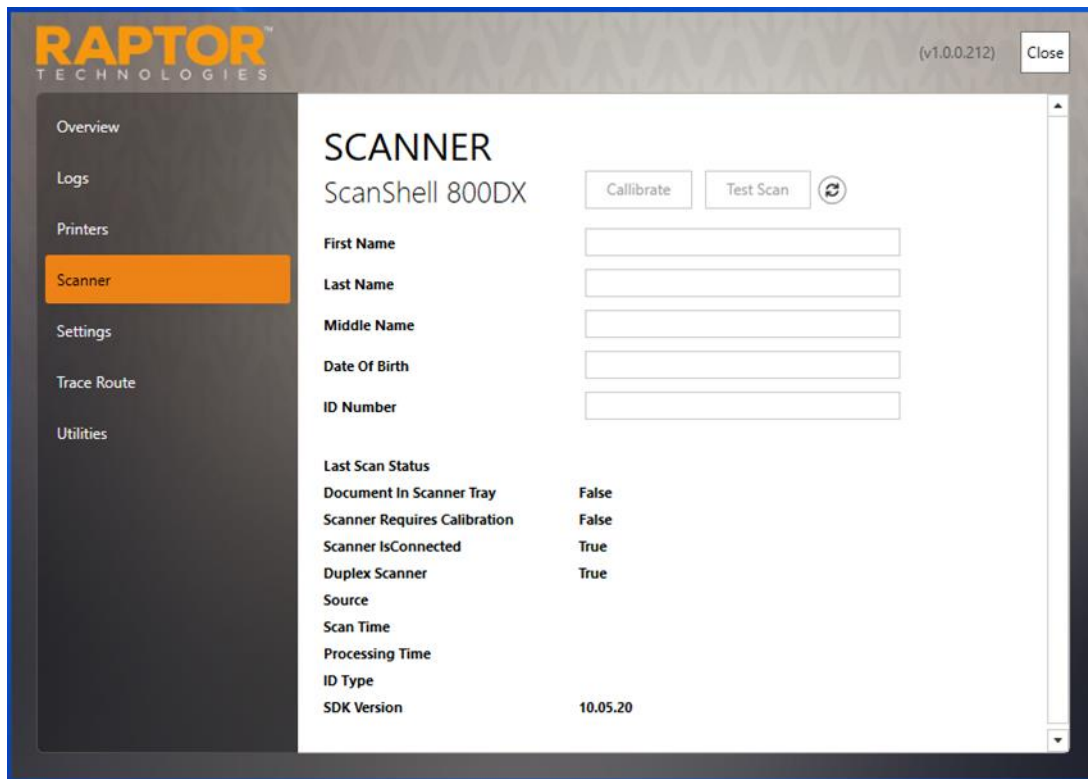


Calibrate Scanner (800 DX)

You should always calibrate your scanner after the software is installed.

Note: Calibration is not required for the 3M CR5400 scanner.

1. Select Scanner in the navigation menu.
2. Insert the calibration paper into the scanner and click Calibrate.



You can also test the scanner from this screen. Insert an ID card into the scanner and click Test Scan.